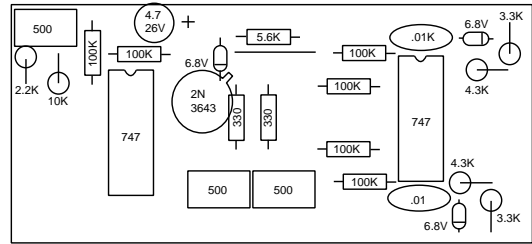
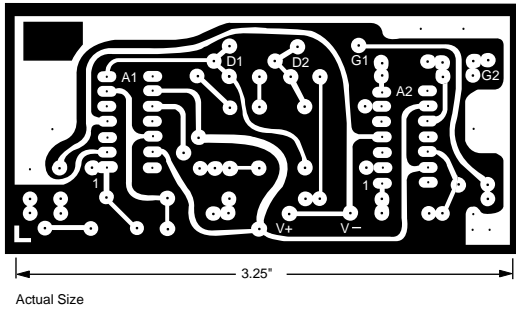


CIRCUIT BOARD AND LAYOUT



REFERENCE

1. D. Lane, " 'Smart' Bias Supply for Delicate MW Transistors," *Microwave Journal*, June 1978, pp. 126-142.

Information and data presented here is subject to change without notice. California Eastern Laboratories assumes no responsibility for the use of any circuits described herein and makes no representations or warranties, expressed or implied, that such circuits are free from patent infringement.

California Eastern Laboratories

Exclusive Agents for NEC RF and Microwave semiconductor products in the U.S. and Canada

4590 Patrick Henry Drive, Santa Clara, CA 95054-1817
Telephone 408-988-3500 FAX 408-988-0279 Telex 34/6393